

Statement of purpose

Health and Social Care Act 2008

Part 1

**The provider's name, legal status, address
and other contact details**

Including address for service of notices and other documents

Please first read the guidance document *Statement of purpose: Guidance for providers*

<p>Statement of purpose, Part 1</p> <p>Health and Social Care Act 2008, Regulation 12, schedule 3</p> <p>The provider's business contact details, including address for service of notices and other documents, in accordance with Sections 93 and 94 of the Health and Social Care Act 2008</p>

1. Provider's name and legal status					
Full name ¹	University Hospitals Bristol and Weston NHS Foundation Trust				
CQC provider ID	RA7				
Legal status ¹	Individual	<input type="checkbox"/>	Partnership	<input type="checkbox"/>	Organisation <input checked="" type="checkbox"/>

2. Provider's address, including for service of notices and other documents	
Business address ²	University Hospitals Bristol and Weston NHS Foundation Trust Trust Headquarters Marlborough Street
Town/city	Bristol
County	Bristol
Post code	BS1 3NU
Business telephone	0117 923 0000 (switchboard)
Electronic mail (email) ³	robert.woolley@uhbw.nhs.uk

By submitting this statement of purpose you are confirming your willingness for CQC to use the **email address** supplied at Section 2 above for service of documents and for sending all other correspondence to you. Email ensures fast and efficient delivery of important information. If you do not want to receive documents by email please check or tick the box below. We will not share this email address with anyone else.

I/we do NOT wish to receive notices and other documents from CQC by email	<input type="checkbox"/>
--	--------------------------

¹ Where the provider is a partnership please fill in the partnership's name at 'Full name' in Section 1 above. Where the partnership does not have a name, please fill in the names of all the partners at Section 3 below

² Where you do not agree to service of notices and other documents by email they will be sent by post to the business address shown in Section 2. This includes draft and final inspection reports. This postal business address will be included on the CQC website.

³ Where you agree to service of notices and other documents by email your copies will be sent to the email address shown in Section 2. This includes draft and final inspection reports.

Please note: CQC can deem notices sent to the email or postal address for service you supply in your statement of purpose as having been served as described in Sections 93 and 94 of the Health and Social Care Act 2008. The address supplied must therefore be accurate, up to date, and able to ensure prompt delivery of these important documents.

3. The full names of all the partners in a partnership	
Names:	Not applicable

Statement of purpose

Health and Social Care Act 2008

Part 2

Aims and objectives

Aims and objectives

What are your aims and objectives in providing the regulated activities and locations shown in part 3 of this statement of purpose

Who we are

University Hospitals Bristol and Weston NHS Foundation Trust (UHBW) is a Public Benefit Corporation authorised by NHS Improvement, the Independent Regulator of NHS Foundation Trusts, on 1 June 2008. The Trust provides services in the three principal domains of clinical service provision, education, and research and innovation.

We have over 13,000 people who deliver over 100 different clinical services across ten different sites. Our nine hospitals are:

In Bristol city-centre:

- Bristol Dental Hospital
- Bristol Eye Hospital
- Bristol Haematology and Oncology Centre
- Bristol Heart Institute
- Bristol Royal Hospital for Children
- Bristol Royal Infirmary
- St Michael's Hospital

In south Bristol:

- South Bristol Community Hospital

In Weston-super-Mare:

- Weston General Hospital

The Trust's tenth registered location is the Central Health Clinic in Bristol city centre.

With services from the neonatal intensive care unit to care of the elderly, we provide care to the people of Bristol and the South West from the very beginning of life to its end. We are one of the country's largest acute NHS trusts with an annual income of over half a billion pounds.

For general provision, services are provided to the population of central and south Bristol and the north of North Somerset, a population of around 350,000 patients. A comprehensive range of services, including diagnostic, medical and surgical specialties are provided through outpatient, day care and inpatient models.

Specialist services are delivered to a wider population throughout the South West and beyond, serving populations typically between one and five million people. The main components of this portfolio are children's services, cardiac services and cancer services as well as a number of smaller, but highly specialised services, some of which are nationally commissioned.

University Hospitals Bristol and Weston NHS Foundation Trust was formed on 1 April 2020 following the merger of University Hospitals Bristol NHS Foundation Trust and Weston Area Health NHS Trust.

As a university teaching trust, we place great importance on teaching and research. The Trust has strong links with both of the city's universities and teaches students from medicine, nursing and other professions allied to health. Research is a core aspect of our activity and has an increasingly important role in the Trust's business with a significant grant secured in partnership with University of Bristol from NIHR in 2016/17 for the Biomedical Research Centre.

As a foundation trust, we have a membership and 29 governors (23 elected and 6 appointed) who hold us and our Board of Directors to account. Over 18,000 people have joined us as

members and their input is vital to our work.

Our clinical services are organised and managed in six clinical divisions – Medicine, Surgery, Specialised, Women’s & Children’s, Diagnostic & Therapy Services and Weston. Our clinical divisions are led by a clinical chair, a head of nursing (head of professions for Diagnostic & Therapy Services) and a divisional director who is the most senior manager in the division. We have two corporate divisions: Estates & Facilities, which includes the operational management of our estate and our facilities services as well as strategic and operational capital planning and delivery; and Trust Services, which includes human resources and organisational development, finance, IT, quality and patient safety, Trust secretariat, transformation, strategy and business planning, chief nurse, medical director team, performance and operations, and research and innovation.

Our mission as a Trust is to improve the health of the people we serve by delivering exceptional care, teaching and research, every day. Working to our values: Respecting Everyone, Embracing Change, Recognising Success, Working Together.

Our vision for 2025 is to:

- Anchor our future as a major specialist service centre and a beacon of excellence for education.
- Work in partnership within an integrated care system locally, regionally and beyond.
- Excel in world-class clinical research and our culture of innovation.

Our strategic priorities

The Trust has identified how we will deliver on this vision. This will be through our six strategic priorities that set out our key areas of ambition around which we will plan, deliver, and guide the decisions we make between now and 2025.



Our Patients: We will excel in consistent delivery of high quality, patient centred care, delivered with compassion.

Our People: We will invest in our staff and their wellbeing, supporting them to care with pride and skill, educating and developing the workforce for the future.

Our Portfolio: We will consolidate and grow our specialist clinical services and improve how we manage demand for our general acute services, focussing on core areas of excellence and pursuing appropriate, effective out of hospital solutions.

Our Partners: We will lead, collaborate and co-create sustainable integrated models of care with our partners to improve the health of the communities we serve.

Our Potential: We will be at the leading edge of research and transformation that is translated rapidly into exceptional clinical care and embrace innovation.

Our Performance: We will deliver financial sustainability for the Trust and contribute to the financial recovery of our health system to safeguard the quality of our services for the future.

The Trust is committed to delivering the following objectives by 2025:

Strategic priority 1: Our patients

We will excel in consistent delivery of high quality, patient centred care, delivered with compassion.

Our strategic objectives are to:

- Deliver outstanding care evidenced through our CQC rating.
- Ensure our services are responsive and achieve all constitutional access standards.
- Ensure that patients have access to the right hospital care when they need it and that we create effective interfaces with out-of-hospital services to discharge patients as soon as they are medically fit.
- Deliver the quality objectives outlined in our quality strategy (ensuring timely access to services; improving patient and staff experience; improving outcomes and reducing mortality; delivering safe and reliable care) supported by our Digital Hospital Programme.
- Continue to develop our estate and provide a modern, nurturing environment for staff and patients.

- Place patient, staff and public engagement at the heart of everything we do.

Strategic priority 2: Our people

We will invest in our staff and their wellbeing, supporting them to care with pride and skill, educating and developing the workforce for the future.

Our strategic objectives are to:

- Deliver a strategic workforce plan that enables us to recruit and retain staff as an organisation and as a local healthcare system.
- Ensure we have a highly skilled and productive workforce that is as diverse as the community that we serve.
- Create innovative workforce solutions and a robust plan for the new roles we will need and how we will fund and grow these roles.
- Develop our role as a beacon of excellence for education in the South West of England, developing exceptional people for exceptional careers, working with our academic partners and training the workforce of the future.
- Enhance our leadership and management capability through delivery of a comprehensive programme of training and development based on robust succession planning.
- Support and enable staff to work more closely with teams in partner organisations and across multiple settings.
- Ensure we access, listen to and use staff feedback to inform targeted actions to improve the day-to-day experience of our staff.
- Achieve upper quartile performance against all workforce measures, including equality, diversity and inclusion.

Strategic priority 3: Our portfolio

We will consolidate and grow our specialist clinical services and improve how we manage demand for our general acute services, focusing on core areas of excellence and pursuing appropriate, effective out of hospital solutions.

Our strategic objectives are to:

- Build, support and participate in networks of specialist services in South West England, Wales and beyond, with clinical academic centres of excellence for cancer, children's, cardiovascular and other services
- Critically evaluate the productivity of our services to support continuous improvement
- Mandate our teams to support delivery of appropriate care out of hospital. Our default as a system will become to care for people out of hospital first
- Resolve internal problems that slow down patient flow which impact on the effective delivery of general and specialist care
- Use technology to improve the safety and effectiveness of our services and be able to offer greater accessibility in and out of our hospitals
- Develop our provider to provider relationships with primary and community care, with an expectation that our teams will actively seek new ways of working together for the benefit of patients.

Strategic priority 4: Our partners

We will lead, collaborate and co-create sustainable integrated models of care with our partners to improve the health of the communities we serve.

Our strategic objectives are to:

- Continue to lead and support the BNSSG Healthier Together partnership to progress towards an integrated care system by 2021, with the aim of making BNSSG "Outstanding"
- Use our digital and research excellence and academic expertise to maximise the implementation of evidenced based clinical pathways across hospital, primary and community provision
- Work more closely with patients, families and other healthcare partners to co-design more joined up care that takes account of the whole person not just their immediate health issues
- Commit to the vision and principles of the BNSSG Acute Care Collaboration Strategy, further developing our partnerships with Weston Area Health NHS Trust and North Bristol NHS Trust

to support improved outcomes for our populations and our collective clinical and financial sustainability

- Promote healthy lifestyles, helping to prevent ill health and improve mental and physical wellbeing through all of our activities
- Actively pursue opportunities to work more effectively and creatively with our voluntary sector and charitable partners.

Strategic priority 5: Our potential

We will be at the leading edge of research and transformation that is translated rapidly into exceptional clinical care and embrace innovation.

Our strategic objectives are to:

- Build our reputation as a world class leader in population health and biomedical research, maximising the potential of the Biomedical Research Centre to undertake cutting edge studies that will improve care and treatment into the future
- Use technology and our digital capabilities to transform where and how we deliver care, education and research and maximise the opportunity provided by our successful appointment as a Global Digital Exemplar site
- Continue to deliver and develop our Transforming Care programme to support the achievement of our strategic ambitions
- Provide our staff with improvement skills and capabilities through our Quality Improvement (QI) Academy
- Create an environment that makes it easy to innovate through our QI Hub
- Remain agile, using evidence to excel in getting it right first time
- Sustain and improve our performance in initiating and delivering high quality clinical research trials.

Strategic priority 6: Our performance

We will deliver financial sustainability for the Trust and contribute to the financial recovery of our health system to safeguard the quality of our services for the future.

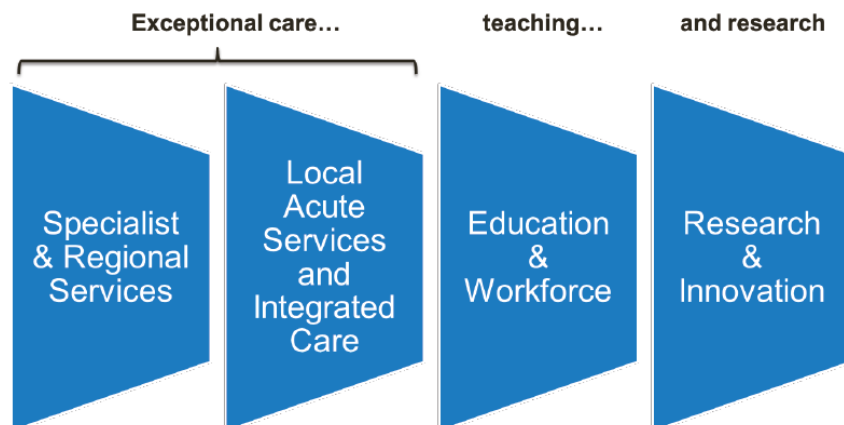
Our strategic objectives are to:

- Work smarter not harder, by eliminating waste and ensuring we add value from every action we take, however small, to maintain our financial health in the context of severe local and national financial pressures
- Achieve upper quartile productivity benchmarks across all measures utilising the benchmarking and productivity information available to us through Getting It Right First Time (GiRFT), the Model Hospital and other programmes
- Evaluate the financial sustainability of all clinical services with the aim of moving Reference Cost Index to below 100 for all
- Secure contracts with commissioners which reflect demand and work with partners to reduce costs across the system through pathway redesign
- Increase our income through innovative commercial approaches.

Implementing our strategy

Our plan for 2025 is focused on our mission as a Trust to improve the health of the people we serve by delivering exceptional care, teaching and research, every day.

Our strategic delivery plans are structured around these core functions with our plan for exceptional care divided into two parts: developing and growing our specialist services and integrating our local hospital services with our partners in Healthier Together.



Specialist and regional services

We have made a strategic choice to focus on where our passion, expertise and experience is – in delivering specialist hospital services. We want to build, support and participate in networks of specialist services in south west England, Wales and beyond, with clinical academic centres of excellence for cancer, children's, cardiovascular and other services.

Local acute services and integrated care

We are committed to working more closely with our partners in Healthier Together and will continue to play a leading role in developing our integrated care system. We have reflected the Acute Care Collaboration Strategy that has been developed as part of Healthier Together in our strategic plans, supporting our shared commitment to:

- Collaborate for excellence in delivery of specialist acute services, working together to
- make best use of the specialist skills of our whole workforce, our physical facilities and equipment
- Develop an integrated model of care where bed-based care is provided only when necessary
- Actively contribute to improving the health and wellbeing of our population.

We know that demand for unplanned and urgent care has continued to rise and that our ambitions to expand our very specialist acute services cannot happen unless we work with our local population and partners to ensure effective, quality alternative services are accessible outside of our hospitals.

Education and workforce

Our people are the most important part of every service we provide. We are committed to making sure that UH Bristol provides the best possible working environment for our people and that we have enough people with the right skills to build the workforce for the future in our system. We want to be a beacon of outstanding education that motivates and inspires our staff and brings direct benefit to patient care. We need to develop stronger academic partnerships to ensure mutual co-creation of our education priorities leading to joined up solutions for our workforce and staff retention. We will embrace learning as part of who we are, and what we do. We want to become nationally and internationally known as a place where exceptional careers are created.

Research and innovation

Sustaining and implementing our excellence in research and supporting a strong culture of innovation are both key to developing our specialist and regional services. We want to be at the cutting edge of healthcare and we will only achieve that by attracting the brightest minds to provide care for patients, carry out research and transform ideas into new treatments for our patients. We want all of our services to be as effective and productive as possible so that we make the absolute most of all our resources. We will focus our efforts on defining which patients benefit from specific treatments, moving away from a one-size-fits-all approach to truly personalised medicine. In the future, no individual will be offered a treatment that is unlikely to be of benefit merely because they belong to a certain patient cohort. Developing our culture and practice around innovation, with the support and resources necessary to deliver real change in how our services work to make the most of new technology, will deliver real improvements for our patients and our people.

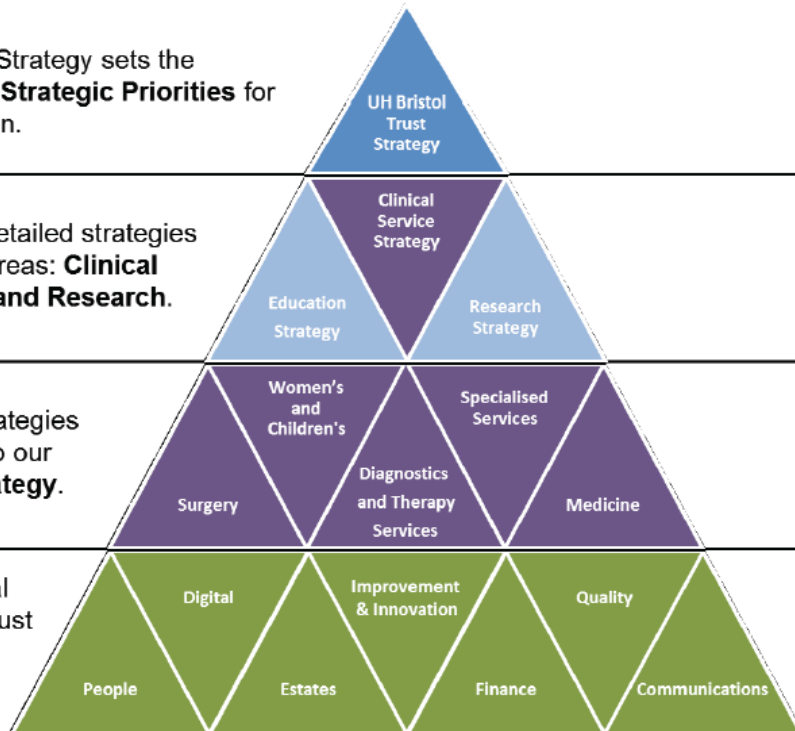
Our overall Trust strategy sets priorities, objectives and a strategic plan for delivery. All of this is supported by strategies across our organisation. The Trust has an integrated strategy framework where our Trust strategy sets the overall mission, vision and strategic priorities for an integrated set of supporting strategies.

The UH Bristol Trust Strategy sets the **Mission, Vision and Strategic Priorities** for the whole organisation.

Supported by more detailed strategies for our core service areas: **Clinical Service, Education and Research.**

And by Divisional Strategies that together make up our **Clinical Service Strategy.**

Delivery of our clinical Divisions and core Trust plans is supported by **Enabling Strategies**



Statement of purpose

Health and Social Care Act 2008

Part 3

Location(s), and

- the people who use the service there
- their service type(s)
- their regulated activity(ies)

Fill in a separate part 3 for each location

The information below is for location no.:	1	of a total of:	6	locations
--	---	----------------	---	-----------

Name of location	UHBW Bristol Main Site
Address	Bristol Royal Infirmary Upper Maudlin Street Bristol
Postcode	BS2 8HW
Telephone	0117 923 0000 (switchboard)
Email	

Description of the location

(The premises and the area around them, access, adaptations, equipment, facilities, suitability for relevant special needs, staffing & qualifications etc.)

University Hospitals Bristol and Weston NHS Foundation Trust is one of the country's largest acute NHS Trusts with an annual income of approximately £550m and over 13,000 staff delivering over 100 different clinical services.

The Trust **main site** consists of six hospitals in the centre of Bristol with bed-base of approximately 1,150 beds (inpatient and day case):

Bristol Royal Infirmary (BRI), including the Bristol Heart Institute (BHI)

The BRI provides general and acute medicine and surgery, specialist surgery, critical care, trauma and orthopaedics and accident and emergency services. The hospital has approximately 500 inpatient beds (55 of which are for critical care) plus a further 45 day-case beds and a Discharge Lounge containing chairs for patients who no longer need to be on a ward. The Bristol Heart Institute is the centre for cardiothoracic services for the northern part of the South West region.

Bristol Eye Hospital (BEH)

Bristol Eye Hospital is one of the country's leading specialist hospitals. The hospital has approximately 24 ophthalmic consultants supported by a wide range of staff including orthoptists, optometrists, pharmacists and nurse practitioners. The Bristol Eye Hospital offers a daytime emergency assessment and treatment service, 7 days a week. The hospital has 11 inpatient and 17 day-case beds. The BEH is the region's leading ophthalmology centre.

Bristol Royal Hospital for Children (BRHC)

The Bristol Royal Hospital for Children (BRHC) provides a local service for Bristol children and a referral service for specialist care for families across the South West and nationally. The hospital has approximately 165 inpatient beds (including 35 critical care) and 37 day case beds. The only dedicated children's hospital in the south west of England, BRHC is the regional centre for a wide range of specialist paediatric services and is the base for the internationally renowned bone marrow transplant unit. The intensive care unit provides the highest level of specialist paediatric critical care.

Bristol Haematology and Oncology Centre (BHOC)

BHOC provides inpatient and day case chemotherapy treatment and radiotherapy, inpatient oncology and day case oncology, a full range of haematology services (benign and malignant disease), including adult stem cell transplantation (with an on-site apheresis unit) and provides comprehensive care centre for haemophiliacs, as well as comprehensive palliative care based in the BHOC with outreach across the hospital. The hospital has approximately 56 inpatient beds and 37 day case beds.

St Michael's Hospital (StMH)

StMH provide a range of facilities including maternity services (a midwifery led unit and central delivery suite), gynaecology and gynae-oncology, day surgery, children's and adult audiology, ear nose and throat outpatients and clinical genetics. The hospital is a regional referral unit for high-risk pregnancies, surgical, cardiac and extreme premature neonatal care, and for foetal medicine. The hospital has approximately 125 beds (including 103 maternity/obstetrics, 31 neonates and 22 gynaecology).

University of Bristol Dental Hospital (BDH)

BDH provides routine and specialist clinical dental services for the south west of England, as well as research and undergraduate and postgraduate teaching. The hospital also provides a walk in Emergency Dental Service for patients who may have difficulty accessing a regular dentist during regular opening hours. There are four day case beds within the hospital.

No of approved places / overnight beds (not NHS)	
---	--

CQC service user bands			
The people that will use this location ('The whole population' means everyone).			
Adults aged 18-65	<input type="checkbox"/>	Adults aged 65+	<input type="checkbox"/>
Mental health	<input type="checkbox"/>	Sensory impairment	<input type="checkbox"/>
Physical disability	<input type="checkbox"/>	People detained under the Mental Health Act	<input type="checkbox"/>
Dementia	<input type="checkbox"/>	People who misuse drugs or alcohol	<input type="checkbox"/>
People with an eating disorder	<input type="checkbox"/>	Learning difficulties or autistic disorder	<input type="checkbox"/>
Children aged 0 – 3 years	<input type="checkbox"/>	Children aged 4-12	<input type="checkbox"/> Children aged 13-18 <input type="checkbox"/>
The whole population	<input checked="" type="checkbox"/>	Other (please specify below)	<input type="checkbox"/>

The CQC service type(s) provided at this location	
Acute services (ACS)	<input checked="" type="checkbox"/>
Prison healthcare services (PHS)	<input type="checkbox"/>
Hospital services for people with mental health needs, learning disabilities, and problems with substance misuse (MLS)	<input type="checkbox"/>
Hospice services (HPS)	<input type="checkbox"/>
Rehabilitation services (RHS)	<input type="checkbox"/>
Long-term conditions services (LTC)	<input type="checkbox"/>
Residential substance misuse treatment and/or rehabilitation service (RSM)	<input type="checkbox"/>
Hyperbaric chamber (HBC)	<input type="checkbox"/>
Community healthcare service (CHC)	<input type="checkbox"/>
Community-based services for people with mental health needs (MHC)	<input type="checkbox"/>
Community-based services for people with a learning disability (LDC)	<input type="checkbox"/>
Community-based services for people who misuse substances (SMC)	<input type="checkbox"/>
Urgent care services (UCS)	<input type="checkbox"/>
Doctors consultation service (DCS)	<input type="checkbox"/>
Doctors treatment service (DTS)	<input type="checkbox"/>
Mobile doctor service (MBS)	<input type="checkbox"/>
Dental service (DEN)	<input type="checkbox"/>
Diagnostic and or screening service (DSS)	<input type="checkbox"/>
Care home service without nursing (CHS)	<input type="checkbox"/>
Care home service with nursing (CHN)	<input type="checkbox"/>
Specialist college service (SPC)	<input type="checkbox"/>
Domiciliary care service (DCC)	<input type="checkbox"/>
Supported living service (SLS)	<input type="checkbox"/>
Shared Lives (SHL)	<input type="checkbox"/>
Extra Care housing services (EXC)	<input type="checkbox"/>
Ambulance service (AMB)	<input type="checkbox"/>
Remote clinical advice service (RCA)	<input type="checkbox"/>
Blood and Transplant service (BTS)	<input type="checkbox"/>

Regulated activity(ies) carried on at this location		
Personal care	<input type="checkbox"/>	
Registered Manager(s) for this regulated activity:		
Accommodation for persons who require nursing or personal care	<input type="checkbox"/>	
Registered Manager(s) for this regulated activity:		
Accommodation for persons who require treatment for substance abuse	<input type="checkbox"/>	
Registered Manager(s) for this regulated activity:		
Accommodation and nursing or personal care in the further education sector	<input type="checkbox"/>	
Registered Manager(s) for this regulated activity:		
Treatment of disease, disorder or injury	<input checked="" type="checkbox"/>	
Registered Manager(s) for this regulated activity: Medical Director		
Assessment or medical treatment for persons detained under the Mental Health Act	<input checked="" type="checkbox"/>	
Registered Manager(s) for this regulated activity: Chief Nurse		
Surgical procedures	<input checked="" type="checkbox"/>	
Registered Manager(s) for this regulated activity: Medical Director		
Diagnostic and screening procedures	<input checked="" type="checkbox"/>	
Registered Manager(s) for this regulated activity: Medical Director		
Management of supply of blood and blood derived products etc	<input checked="" type="checkbox"/>	
Registered Manager(s) for this regulated activity: Medical Director		
Transport services, triage and medical advice provided remotely	<input checked="" type="checkbox"/>	
Registered Manager(s) for this regulated activity: Chief Operating Officer		
Maternity and midwifery services	<input checked="" type="checkbox"/>	
Registered Manager(s) for this regulated activity: Chief Nurse		
Termination of pregnancies	<input checked="" type="checkbox"/>	
Registered Manager(s) for this regulated activity: Medical Director		
Services in slimming clinics	<input type="checkbox"/>	
Registered Manager(s) for this regulated activity:		
Nursing care	<input type="checkbox"/>	
Registered Manager(s) for this regulated activity:		
Family planning service	<input checked="" type="checkbox"/>	
Registered Manager(s) for this regulated activity: Medical Director		

Statement of purpose

Health and Social Care Act 2008

Part 3

Location(s), and

- the people who use the service there
- their service type(s)
- their regulated activity(ies)

Fill in a separate part 3 for each location

The information below is for location no.:	2	of a total of:	6	locations
--	---	----------------	---	-----------

Name of location	South Bristol Community Hospital
Address	Hengrove Promenade Bristol
Postcode	BS14 0DE
Telephone	0117 923 0000 (switchboard)
Email	

Description of the location

(The premises and the area around them, access, adaptations, equipment, facilities, suitability for relevant special needs, staffing & qualifications etc.)

University Hospitals Bristol and Weston NHS Foundation Trust is the lead provider of services at the South Bristol Community Hospital (SBCH). The hospital is situated in the Hengrove area of Bristol to the south of the city centre main site and provides non-acute services to a population of approximately 300,000 from central and south Bristol. South Bristol Community Hospital provides day surgery, endoscopy, a wide range of outpatient clinics for adults and paediatric and an outpatient adult rehabilitation service.

There are two rehabilitation in-patient wards for stroke and general rehabilitation adult patients. These wards have a total of 60 rehabilitation beds 21 day-case beds. The hospital also has a diagnostic department providing x-rays and ultrasound scans.

The hospital provides a community and teaching dental service and there is an urgent care centre for minor illnesses and injuries on the site, managed by Community Health Services and available seven days per week.

No of approved places / overnight beds (not NHS)	
---	--

CQC service user bands

The people that will use this location ('The whole population' means everyone).

Adults aged 18-65	<input type="checkbox"/>	Adults aged 65+	<input type="checkbox"/>
Mental health	<input type="checkbox"/>	Sensory impairment	<input type="checkbox"/>
Physical disability	<input type="checkbox"/>	People detained under the Mental Health Act	<input type="checkbox"/>
Dementia	<input type="checkbox"/>	People who misuse drugs or alcohol	<input type="checkbox"/>
People with an eating disorder	<input type="checkbox"/>	Learning difficulties or autistic disorder	<input type="checkbox"/>
Children aged 0 – 3 years	<input type="checkbox"/>	Children aged 4-12	<input type="checkbox"/> Children aged 13-18 <input type="checkbox"/>
The whole population	<input checked="" type="checkbox"/>	Other (please specify below)	<input type="checkbox"/>

The CQC service type(s) provided at this location	
Acute services (ACS)	<input checked="" type="checkbox"/>
Prison healthcare services (PHS)	<input type="checkbox"/>
Hospital services for people with mental health needs, learning disabilities, and problems with substance misuse (MLS)	<input type="checkbox"/>
Hospice services (HPS)	<input type="checkbox"/>
Rehabilitation services (RHS)	<input type="checkbox"/>
Long-term conditions services (LTC)	<input type="checkbox"/>
Residential substance misuse treatment and/or rehabilitation service (RSM)	<input type="checkbox"/>
Hyperbaric chamber (HBC)	<input type="checkbox"/>
Community healthcare service (CHC)	<input type="checkbox"/>
Community-based services for people with mental health needs (MHC)	<input type="checkbox"/>
Community-based services for people with a learning disability (LDC)	<input type="checkbox"/>
Community-based services for people who misuse substances (SMC)	<input type="checkbox"/>
Urgent care services (UCS)	<input type="checkbox"/>
Doctors consultation service (DCS)	<input type="checkbox"/>
Doctors treatment service (DTS)	<input type="checkbox"/>
Mobile doctor service (MBS)	<input type="checkbox"/>
Dental service (DEN)	<input type="checkbox"/>
Diagnostic and or screening service (DSS)	<input type="checkbox"/>
Care home service without nursing (CHS)	<input type="checkbox"/>
Care home service with nursing (CHN)	<input type="checkbox"/>
Specialist college service (SPC)	<input type="checkbox"/>
Domiciliary care service (DCC)	<input type="checkbox"/>
Supported living service (SLS)	<input type="checkbox"/>
Shared Lives (SHL)	<input type="checkbox"/>
Extra Care housing services (EXC)	<input type="checkbox"/>
Ambulance service (AMB)	<input type="checkbox"/>
Remote clinical advice service (RCA)	<input type="checkbox"/>
Blood and Transplant service (BTS)	<input type="checkbox"/>

Regulated activity(ies) carried on at this location		
Personal care	<input type="checkbox"/>	
Registered Manager(s) for this regulated activity:		
Accommodation for persons who require nursing or personal care	<input type="checkbox"/>	
Registered Manager(s) for this regulated activity:		
Accommodation for persons who require treatment for substance abuse	<input type="checkbox"/>	
Registered Manager(s) for this regulated activity:		
Accommodation and nursing or personal care in the further education sector	<input type="checkbox"/>	
Registered Manager(s) for this regulated activity:		
Treatment of disease, disorder or injury	<input checked="" type="checkbox"/>	
Registered Manager(s) for this regulated activity: Medical Director		
Assessment or medical treatment for persons detained under the Mental Health Act	<input checked="" type="checkbox"/>	
Registered Manager(s) for this regulated activity: Chief Nurse		
Surgical procedures	<input checked="" type="checkbox"/>	
Registered Manager(s) for this regulated activity: Medical Director		
Diagnostic and screening procedures	<input checked="" type="checkbox"/>	
Registered Manager(s) for this regulated activity: Medical Director		
Management of supply of blood and blood derived products etc	<input type="checkbox"/>	
Registered Manager(s) for this regulated activity:		
Transport services, triage and medical advice provided remotely	<input checked="" type="checkbox"/>	
Registered Manager(s) for this regulated activity: Chief Operating Officer		
Maternity and midwifery services	<input checked="" type="checkbox"/>	
Registered Manager(s) for this regulated activity: Chief Nurse		
Termination of pregnancies	<input checked="" type="checkbox"/>	
Registered Manager(s) for this regulated activity: Medical Director		
Services in slimming clinics	<input type="checkbox"/>	
Registered Manager(s) for this regulated activity:		
Nursing care	<input type="checkbox"/>	
Registered Manager(s) for this regulated activity:		
Family planning service	<input checked="" type="checkbox"/>	
Registered Manager(s) for this regulated activity: Medical Director		

Statement of purpose

Health and Social Care Act 2008

Part 3

Location(s), and

- the people who use the service there
- their service type(s)
- their regulated activity(ies)

Fill in a separate part 3 for each location

The information below is for location no.:	3	of a total of:	6	locations
--	---	----------------	---	-----------

Name of location	Central Health Clinic
Address	Tower Hill Bristol
Postcode	BS2 0JD
Telephone	0117 923 0000 (switchboard)
Email	

Description of the location

(The premises and the area around them, access, adaptations, equipment, facilities, suitability for relevant special needs, staffing & qualifications etc)

The Central Health Clinic is located in Bristol City Centre and is run by University Hospitals Bristol and Weston NHS Foundation Trust. An integrated sexual health service (Unity Sexual Health) is provided from the Central Health Clinic in collaboration with other community partners throughout the city.

The Central Health Clinic also hosts the Avon Breast Screening Service, chronic pain services and the Sexual Assault Referral Service ('The Bridge'). CHC is registered with the CQC to carry out early medical terminations of pregnancy through its Pregnancy Advisory Service.

No of approved places / overnight beds (not NHS)**CQC service user bands**

The people that will use this location ('The whole population' means everyone).

Adults aged 18-65	<input type="checkbox"/>	Adults aged 65+	<input type="checkbox"/>
Mental health	<input type="checkbox"/>	Sensory impairment	<input type="checkbox"/>
Physical disability	<input type="checkbox"/>	People detained under the Mental Health Act	<input type="checkbox"/>
Dementia	<input type="checkbox"/>	People who misuse drugs or alcohol	<input type="checkbox"/>
People with an eating disorder	<input type="checkbox"/>	Learning difficulties or autistic disorder	<input type="checkbox"/>
Children aged 0 – 3 years	<input type="checkbox"/>	Children aged 4-12	<input type="checkbox"/> Children aged 13-18
The whole population	<input checked="" type="checkbox"/>	Other (please specify below)	<input type="checkbox"/>

The CQC service type(s) provided at this location	
Acute services (ACS)	<input checked="" type="checkbox"/>
Prison healthcare services (PHS)	<input type="checkbox"/>
Hospital services for people with mental health needs, learning disabilities, and problems with substance misuse (MLS)	<input type="checkbox"/>
Hospice services (HPS)	<input type="checkbox"/>
Rehabilitation services (RHS)	<input type="checkbox"/>
Long-term conditions services (LTC)	<input type="checkbox"/>
Residential substance misuse treatment and/or rehabilitation service (RSM)	<input type="checkbox"/>
Hyperbaric chamber (HBC)	<input type="checkbox"/>
Community healthcare service (CHC)	<input type="checkbox"/>
Community-based services for people with mental health needs (MHC)	<input type="checkbox"/>
Community-based services for people with a learning disability (LDC)	<input type="checkbox"/>
Community-based services for people who misuse substances (SMC)	<input type="checkbox"/>
Urgent care services (UCS)	<input type="checkbox"/>
Doctors consultation service (DCS)	<input type="checkbox"/>
Doctors treatment service (DTS)	<input type="checkbox"/>
Mobile doctor service (MBS)	<input type="checkbox"/>
Dental service (DEN)	<input type="checkbox"/>
Diagnostic and or screening service (DSS)	<input type="checkbox"/>
Care home service without nursing (CHS)	<input type="checkbox"/>
Care home service with nursing (CHN)	<input type="checkbox"/>
Specialist college service (SPC)	<input type="checkbox"/>
Domiciliary care service (DCC)	<input type="checkbox"/>
Supported living service (SLS)	<input type="checkbox"/>
Shared Lives (SHL)	<input type="checkbox"/>
Extra Care housing services (EXC)	<input type="checkbox"/>
Ambulance service (AMB)	<input type="checkbox"/>
Remote clinical advice service (RCA)	<input type="checkbox"/>
Blood and Transplant service (BTS)	<input type="checkbox"/>

Regulated activity(ies) carried on at this location		
Personal care	<input type="checkbox"/>	
Registered Manager(s) for this regulated activity:		
Accommodation for persons who require nursing or personal care	<input type="checkbox"/>	
Registered Manager(s) for this regulated activity:		
Accommodation for persons who require treatment for substance abuse	<input type="checkbox"/>	
Registered Manager(s) for this regulated activity:		
Accommodation and nursing or personal care in the further education sector	<input type="checkbox"/>	
Registered Manager(s) for this regulated activity:		
Treatment of disease, disorder or injury	<input checked="" type="checkbox"/>	
Registered Manager(s) for this regulated activity: Medical Director		
Assessment or medical treatment for persons detained under the Mental Health Act	<input type="checkbox"/>	
Registered Manager(s) for this regulated activity:		
Surgical procedures	<input type="checkbox"/>	
Registered Manager(s) for this regulated activity:		
Diagnostic and screening procedures	<input checked="" type="checkbox"/>	
Registered Manager(s) for this regulated activity: Medical Director		
Management of supply of blood and blood derived products etc	<input type="checkbox"/>	
Registered Manager(s) for this regulated activity:		
Transport services, triage and medical advice provided remotely	<input checked="" type="checkbox"/>	
Registered Manager(s) for this regulated activity: Chief Operating Officer		
Maternity and midwifery services	<input type="checkbox"/>	
Registered Manager(s) for this regulated activity:		
Termination of pregnancies	<input checked="" type="checkbox"/>	
Registered Manager(s) for this regulated activity: Medical Director		
Services in slimming clinics	<input type="checkbox"/>	
Registered Manager(s) for this regulated activity:		
Nursing care	<input type="checkbox"/>	
Registered Manager(s) for this regulated activity:		
Family planning service	<input checked="" type="checkbox"/>	
Registered Manager(s) for this regulated activity: Medical Director		

Statement of purpose

Health and Social Care Act 2008

Part 3

Location(s), and

- the people who use the service there
- their service type(s)
- their regulated activity(ies)

Fill in a separate part 3 for each location

The information below is for location no.:	4	of a total of:	6	locations
--	---	----------------	---	-----------

Name of location	Trust Headquarters
Address	Marlborough Street Bristol
Postcode	BS1 3NU
Telephone	(0117) 342 3600
Email	

Description of the location

(The premises and the area around them, access, adaptations, equipment, facilities, suitability for relevant special needs, staffing & qualifications etc.)

As the registered address for the Trust's community services.

No of approved places / overnight beds (not NHS)

CQC service user bands

The people that will use this location ('The whole population' means everyone).

Adults aged 18-65	<input type="checkbox"/>	Adults aged 65+	<input type="checkbox"/>
Mental health	<input type="checkbox"/>	Sensory impairment	<input type="checkbox"/>
Physical disability	<input type="checkbox"/>	People detained under the Mental Health Act	<input type="checkbox"/>
Dementia	<input type="checkbox"/>	People who misuse drugs or alcohol	<input type="checkbox"/>
People with an eating disorder	<input type="checkbox"/>	Learning difficulties or autistic disorder	<input type="checkbox"/>
Children aged 0 – 3 years	<input type="checkbox"/>	Children aged 4-12	<input type="checkbox"/> Children aged 13-18
The whole population	<input checked="" type="checkbox"/>	Other (please specify below)	<input type="checkbox"/>

The CQC service type(s) provided at this location	
Acute services (ACS)	<input checked="" type="checkbox"/>
Prison healthcare services (PHS)	<input type="checkbox"/>
Hospital services for people with mental health needs, learning disabilities, and problems with substance misuse (MLS)	<input type="checkbox"/>
Hospice services (HPS)	<input type="checkbox"/>
Rehabilitation services (RHS)	<input type="checkbox"/>
Long-term conditions services (LTC)	<input type="checkbox"/>
Residential substance misuse treatment and/or rehabilitation service (RSM)	<input type="checkbox"/>
Hyperbaric chamber (HBC)	<input type="checkbox"/>
Community healthcare service (CHC)	<input type="checkbox"/>
Community-based services for people with mental health needs (MHC)	<input type="checkbox"/>
Community-based services for people with a learning disability (LDC)	<input type="checkbox"/>
Community-based services for people who misuse substances (SMC)	<input type="checkbox"/>
Urgent care services (UCS)	<input type="checkbox"/>
Doctors consultation service (DCS)	<input type="checkbox"/>
Doctors treatment service (DTS)	<input type="checkbox"/>
Mobile doctor service (MBS)	<input type="checkbox"/>
Dental service (DEN)	<input type="checkbox"/>
Diagnostic and or screening service (DSS)	<input type="checkbox"/>
Care home service without nursing (CHS)	<input type="checkbox"/>
Care home service with nursing (CHN)	<input type="checkbox"/>
Specialist college service (SPC)	<input type="checkbox"/>
Domiciliary care service (DCC)	<input type="checkbox"/>
Supported living service (SLS)	<input type="checkbox"/>
Shared Lives (SHL)	<input type="checkbox"/>
Extra Care housing services (EXC)	<input type="checkbox"/>
Ambulance service (AMB)	<input type="checkbox"/>
Remote clinical advice service (RCA)	<input type="checkbox"/>
Blood and Transplant service (BTS)	<input type="checkbox"/>

Regulated activity(ies) carried on at this location		
Personal care	<input type="checkbox"/>	
Registered Manager(s) for this regulated activity:		
Accommodation for persons who require nursing or personal care	<input type="checkbox"/>	
Registered Manager(s) for this regulated activity:		
Accommodation for persons who require treatment for substance abuse	<input type="checkbox"/>	
Registered Manager(s) for this regulated activity:		
Accommodation and nursing or personal care in the further education sector	<input type="checkbox"/>	
Registered Manager(s) for this regulated activity:		
Treatment of disease, disorder or injury	<input checked="" type="checkbox"/>	
Registered Manager(s) for this regulated activity: Medical Director		
Assessment or medical treatment for persons detained under the Mental Health Act	<input type="checkbox"/>	
Registered Manager(s) for this regulated activity:		
Surgical procedures	<input type="checkbox"/>	
Registered Manager(s) for this regulated activity:		
Diagnostic and screening procedures	<input checked="" type="checkbox"/>	
Registered Manager(s) for this regulated activity: Medical Director		
Management of supply of blood and blood derived products etc	<input type="checkbox"/>	
Registered Manager(s) for this regulated activity:		
Transport services, triage and medical advice provided remotely	<input checked="" type="checkbox"/>	
Registered Manager(s) for this regulated activity: Chief Operating Officer		
Maternity and midwifery services	<input checked="" type="checkbox"/>	
Registered Manager(s) for this regulated activity: Chief Nurse		
Termination of pregnancies	<input type="checkbox"/>	
Registered Manager(s) for this regulated activity:		
Services in slimming clinics	<input type="checkbox"/>	
Registered Manager(s) for this regulated activity:		
Nursing care	<input type="checkbox"/>	
Registered Manager(s) for this regulated activity:		
Family planning service	<input checked="" type="checkbox"/>	
Registered Manager(s) for this regulated activity: Medical Director		

Statement of purpose

Health and Social Care Act 2008

Part 3

Location(s), and

- the people who use the service there
- their service type(s)
- their regulated activity(ies)

Fill in a separate part 3 for each location

The information below is for location no.:	5	of a total of:	6	locations
--	---	----------------	---	-----------

Name of location	Weston General Hospital
Address	Grange Road Uphill Weston-super-Mare North Somerset
Postcode	BS23 4QT
Telephone	01934 647001
Email	

Description of the location

(The premises and the area around them, access, adaptations, equipment, facilities, suitability for relevant special needs, staffing & qualifications etc)

Weston General Hospital (WGH) is situated on the southern outskirts of the seaside town of Weston-super-Mare and services its local population of approximately 155,000.

WGH provides general and acute medicine, surgery, critical care, trauma and orthopaedics, day surgery, day case oncology and chemotherapy, endoscopy, paediatric daycare, midwifery led perinatal services, 12 hour accident and emergency and a wide range of outpatient clinics for adults and children.

The hospital has 288 inpatient beds, 37 day-case beds, and 4 critical care beds

No of approved places / overnight beds (not NHS)	
---	--

CQC service user bands				
The people that will use this location ('The whole population' means everyone).				
Adults aged 18-65	<input type="checkbox"/>	Adults aged 65+	<input type="checkbox"/>	
Mental health	<input type="checkbox"/>	Sensory impairment	<input type="checkbox"/>	
Physical disability	<input type="checkbox"/>	People detained under the Mental Health Act	<input type="checkbox"/>	
Dementia	<input type="checkbox"/>	People who misuse drugs or alcohol	<input type="checkbox"/>	
People with an eating disorder	<input type="checkbox"/>	Learning difficulties or autistic disorder	<input type="checkbox"/>	
Children aged 0 – 3 years	<input type="checkbox"/>	Children aged 4-12	<input type="checkbox"/>	Children aged 13-18 <input type="checkbox"/>
The whole population	<input checked="" type="checkbox"/>	Other (please specify below)	<input type="checkbox"/>	

The CQC service type(s) provided at this location	
Acute services (ACS)	<input checked="" type="checkbox"/>
Prison healthcare services (PHS)	<input type="checkbox"/>
Hospital services for people with mental health needs, learning disabilities, and problems with substance misuse (MLS)	<input type="checkbox"/>
Hospice services (HPS)	<input type="checkbox"/>
Rehabilitation services (RHS)	<input type="checkbox"/>
Long-term conditions services (LTC)	<input type="checkbox"/>
Residential substance misuse treatment and/or rehabilitation service (RSM)	<input type="checkbox"/>
Hyperbaric chamber (HBC)	<input type="checkbox"/>
Community healthcare service (CHC)	<input type="checkbox"/>
Community-based services for people with mental health needs (MHC)	<input type="checkbox"/>
Community-based services for people with a learning disability (LDC)	<input type="checkbox"/>
Community-based services for people who misuse substances (SMC)	<input type="checkbox"/>
Urgent care services (UCS)	<input type="checkbox"/>
Doctors consultation service (DCS)	<input type="checkbox"/>
Doctors treatment service (DTS)	<input type="checkbox"/>
Mobile doctor service (MBS)	<input type="checkbox"/>
Dental service (DEN)	<input type="checkbox"/>
Diagnostic and or screening service (DSS)	<input type="checkbox"/>
Care home service without nursing (CHS)	<input type="checkbox"/>
Care home service with nursing (CHN)	<input type="checkbox"/>
Specialist college service (SPC)	<input type="checkbox"/>
Domiciliary care service (DCC)	<input type="checkbox"/>
Supported living service (SLS)	<input type="checkbox"/>
Shared Lives (SHL)	<input type="checkbox"/>
Extra Care housing services (EXC)	<input type="checkbox"/>
Ambulance service (AMB)	<input type="checkbox"/>
Remote clinical advice service (RCA)	<input type="checkbox"/>
Blood and Transplant service (BTS)	<input type="checkbox"/>

Regulated activity(ies) carried on at this location		
Personal care	<input type="checkbox"/>	
Registered Manager(s) for this regulated activity:		
Accommodation for persons who require nursing or personal care	<input type="checkbox"/>	
Registered Manager(s) for this regulated activity:		
Accommodation for persons who require treatment for substance abuse	<input type="checkbox"/>	
Registered Manager(s) for this regulated activity:		
Accommodation and nursing or personal care in the further education sector	<input type="checkbox"/>	
Registered Manager(s) for this regulated activity:		
Treatment of disease, disorder or injury	<input checked="" type="checkbox"/>	
Registered Manager(s) for this regulated activity: Medical Director		
Assessment or medical treatment for persons detained under the Mental Health Act	<input checked="" type="checkbox"/>	
Registered Manager(s) for this regulated activity: Chief Nurse		
Surgical procedures	<input checked="" type="checkbox"/>	
Registered Manager(s) for this regulated activity: Medical Director		
Diagnostic and screening procedures	<input checked="" type="checkbox"/>	
Registered Manager(s) for this regulated activity: Medical Director		
Management of supply of blood and blood derived products etc	<input checked="" type="checkbox"/>	
Registered Manager(s) for this regulated activity: Medical Director		
Transport services, triage and medical advice provided remotely	<input type="checkbox"/>	
Registered Manager(s) for this regulated activity:		
Maternity and midwifery services	<input checked="" type="checkbox"/>	
Registered Manager(s) for this regulated activity: Chief Nurse		
Termination of pregnancies	<input checked="" type="checkbox"/>	
Registered Manager(s) for this regulated activity: Medical Director		
Services in slimming clinics	<input type="checkbox"/>	
Registered Manager(s) for this regulated activity:		
Nursing care	<input type="checkbox"/>	
Registered Manager(s) for this regulated activity:		
Family planning service	<input checked="" type="checkbox"/>	
Registered Manager(s) for this regulated activity: Medical Director		

Statement of purpose

Health and Social Care Act 2008

Part 3

Location(s), and

- the people who use the service there
- their service type(s)
- their regulated activity(ies)

Fill in a separate part 3 for each location

The information below is for location no.:	6	of a total of:	6	locations
--	---	----------------	---	-----------

Name of location	Spire Bristol Hospital
Address	The Glen Redland Hill Redland Bristol
Postcode	BS6 6UT
Telephone	0117 980 4000
Email	

Description of the location (The premises and the area around them, access, adaptations, equipment, facilities, suitability for relevant special needs, staffing & qualifications etc)	
<p>The Spire Bristol Hospital has temporarily been requisitioned by the NHS during the COVID-19 crisis, during which time the hospital will, in effect, function as an extension of the Bristol Royal Infirmary.</p> <p>The facility offers 64 beds, including 3 intensive care beds.</p> <p>Adult patients will be seen at the Spire for planned care in medicine and surgery; it is not currently envisaged as a facility for the treatment of patients identified as COVID-positive, or for children.</p> <p>The facility will be available for use, as and when required by the NHS, with effect from 1st May 2020 until further notice.</p>	
No of approved places / overnight beds (not NHS)	

CQC service user bands

The people that will use this location ('The whole population' means everyone).

Adults aged 18-65	<input type="checkbox"/>	Adults aged 65+	<input type="checkbox"/>
Mental health	<input type="checkbox"/>	Sensory impairment	<input type="checkbox"/>
Physical disability	<input type="checkbox"/>	People detained under the Mental Health Act	<input type="checkbox"/>
Dementia	<input type="checkbox"/>	People who misuse drugs or alcohol	<input type="checkbox"/>
People with an eating disorder	<input type="checkbox"/>	Learning difficulties or autistic disorder	<input type="checkbox"/>
Children aged 0 – 3 years	<input type="checkbox"/>	Children aged 4-12	<input type="checkbox"/>
		Children aged 13-18	<input type="checkbox"/>
The whole population	X	Other (please specify below)	<input type="checkbox"/>

The CQC service type(s) provided at this location	
Acute services (ACS)	<input checked="" type="checkbox"/>
Prison healthcare services (PHS)	<input type="checkbox"/>
Hospital services for people with mental health needs, learning disabilities, and problems with substance misuse (MLS)	<input type="checkbox"/>
Hospice services (HPS)	<input type="checkbox"/>
Rehabilitation services (RHS)	<input type="checkbox"/>
Long-term conditions services (LTC)	<input type="checkbox"/>
Residential substance misuse treatment and/or rehabilitation service (RSM)	<input type="checkbox"/>
Hyperbaric chamber (HBC)	<input type="checkbox"/>
Community healthcare service (CHC)	<input type="checkbox"/>
Community-based services for people with mental health needs (MHC)	<input type="checkbox"/>
Community-based services for people with a learning disability (LDC)	<input type="checkbox"/>
Community-based services for people who misuse substances (SMC)	<input type="checkbox"/>
Urgent care services (UCS)	<input type="checkbox"/>
Doctors consultation service (DCS)	<input type="checkbox"/>
Doctors treatment service (DTS)	<input type="checkbox"/>
Mobile doctor service (MBS)	<input type="checkbox"/>
Dental service (DEN)	<input type="checkbox"/>
Diagnostic and or screening service (DSS)	<input type="checkbox"/>
Care home service without nursing (CHS)	<input type="checkbox"/>
Care home service with nursing (CHN)	<input type="checkbox"/>
Specialist college service (SPC)	<input type="checkbox"/>
Domiciliary care service (DCC)	<input type="checkbox"/>
Supported living service (SLS)	<input type="checkbox"/>
Shared Lives (SHL)	<input type="checkbox"/>
Extra Care housing services (EXC)	<input type="checkbox"/>
Ambulance service (AMB)	<input type="checkbox"/>
Remote clinical advice service (RCA)	<input type="checkbox"/>
Blood and Transplant service (BTS)	<input type="checkbox"/>

Regulated activity(ies) carried on at this location		
Personal care	<input type="checkbox"/>	
Registered Manager(s) for this regulated activity:		
Accommodation for persons who require nursing or personal care	<input type="checkbox"/>	
Registered Manager(s) for this regulated activity:		
Accommodation for persons who require treatment for substance abuse	<input type="checkbox"/>	
Registered Manager(s) for this regulated activity:		
Accommodation and nursing or personal care in the further education sector	<input type="checkbox"/>	
Registered Manager(s) for this regulated activity:		
Treatment of disease, disorder or injury	<input checked="" type="checkbox"/>	
Registered Manager(s) for this regulated activity: Medical Director		
Assessment or medical treatment for persons detained under the Mental Health Act	<input type="checkbox"/>	
Registered Manager(s) for this regulated activity:		
Surgical procedures	<input checked="" type="checkbox"/>	
Registered Manager(s) for this regulated activity: Medical Director		
Diagnostic and screening procedures	<input checked="" type="checkbox"/>	
Registered Manager(s) for this regulated activity: Medical Director		
Management of supply of blood and blood derived products etc	<input type="checkbox"/>	
Registered Manager(s) for this regulated activity:		
Transport services, triage and medical advice provided remotely	<input type="checkbox"/>	
Registered Manager(s) for this regulated activity:		
Maternity and midwifery services	<input type="checkbox"/>	
Registered Manager(s) for this regulated activity:		
Termination of pregnancies	<input type="checkbox"/>	
Registered Manager(s) for this regulated activity:		
Services in slimming clinics	<input type="checkbox"/>	
Registered Manager(s) for this regulated activity:		
Nursing care	<input type="checkbox"/>	
Registered Manager(s) for this regulated activity:		
Family planning service	<input type="checkbox"/>	
Registered Manager(s) for this regulated activity:		