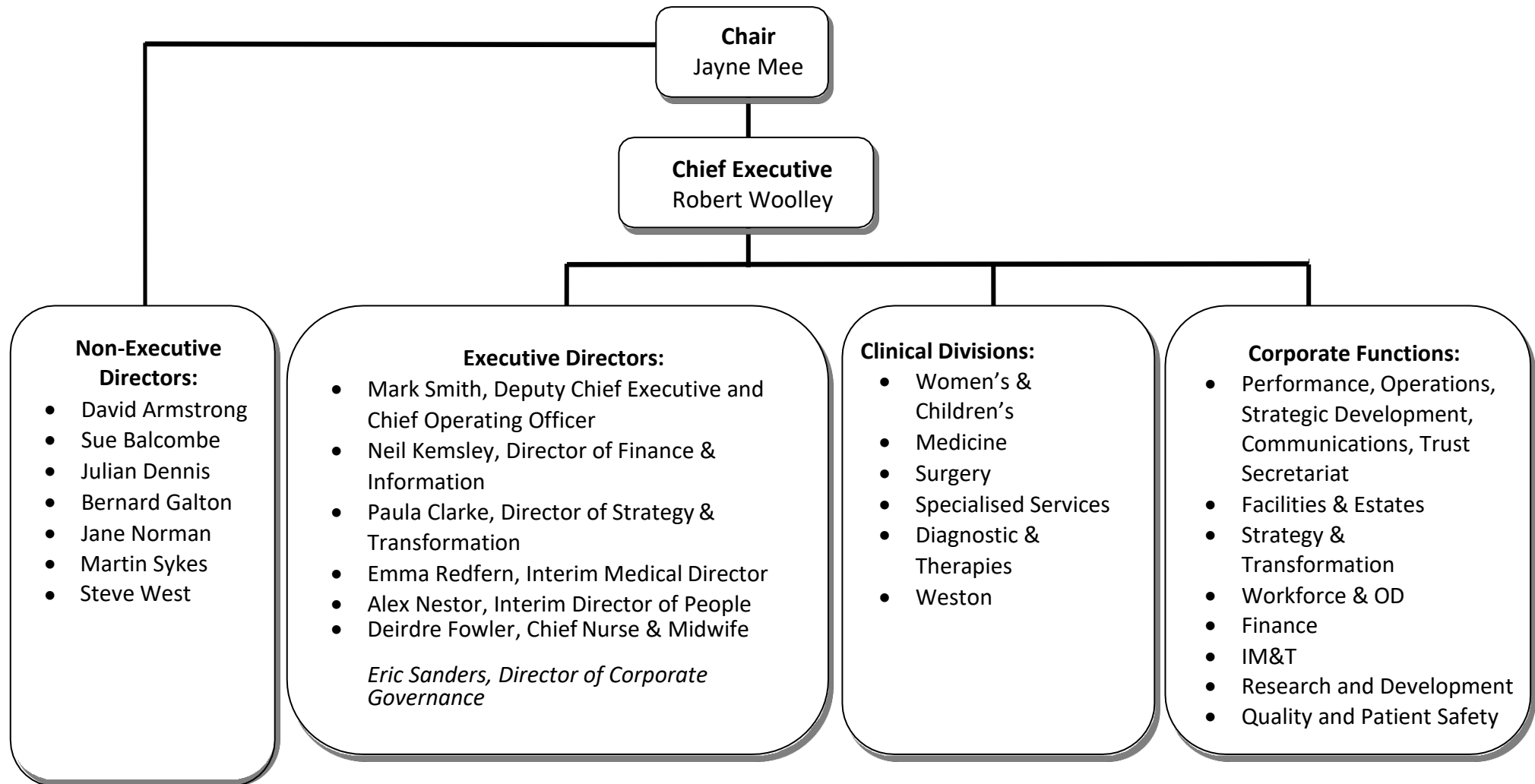


## University Hospitals Bristol and Weston NHS Foundation Trust – Organisational Structure (Board and Divisions)



<p><b>Women's and Children's Division</b>  <b>Divisional Director:</b>  <i>Fiona Jones</i>  <b>Deputy Divisional Directors:</b>  <i>Caitlin Moss</i>  <b>Clinical Chair:</b>  <i>Martin Gargan</i>  <b>Interim Head of Paediatric Nursing:</b>  <i>Rachel Hughes</i>  <b>Head of Midwifery:</b>  <i>Sarah Windfeld</i></p>	<p><b>Medicine Division</b>  <b>Interim Divisional Director:</b>  <i>Chris Atkinson</i>  <b>Deputy Divisional Directors:</b>  <i>Sufi Hussain, Alice Woolstenholmes</i>  <b>Clinical Chair:</b>  <i>Emma-Kate Reed</i>  <b>Head of Nursing:</b>  <i>Hayley Long</i>  <b>Deputy Head of Nursing:</b>  <i>Nicola Gould, Johanna Lloyd-Rees and Angela Bezer</i></p>	<p><b>Surgery Division</b>  <b>Divisional Director:</b>  <i>Alison Lowndes</i>  <b>Deputy Divisional Director:</b>  <i>Victoria McFarlane, Sarah Swift, Ceit Scott</i>  <b>Clinical Chair:</b>  <i>Sanchit Mehendale</i>  <b>Head of Nursing:</b>  <i>Sarah Chalkley</i></p>	<p><b>Specialised Services Division</b>  <b>Divisional Director:</b>  <i>Anna MacGregor</i>  <b>Deputy Divisional Director:</b>  <i>Sophie Baugh</i>  <b>Clinical Chair:</b>  <i>Mandie Townsend</i>  <b>Head of Nursing:</b>  <i>Helen Bishop</i></p>	<p><b>Diagnostic and Therapies Division</b>  <b>Divisional Director:</b>  <i>Jenny Keeble</i>  <b>Deputy Divisional Director:</b>  <i>Louise Corrigan</i>  <b>Clinical Chair:</b>  <i>Becky Maxwell</i>  <b>Head of AHPs:</b>  <i>Vimal Sriram</i></p>	<p><b>Weston Division</b>  <b>Managing Director:</b>  <i>Ian Barrington</i>  <b>Site Medical Director:</b>  <i>Andy Hollowood</i>  <b>Deputy Chief Nurse:</b>  <i>Mark Goninon</i>  <b>Divisional Director:</b>  <i>Sarah James</i>  <b>Deputy Divisional Director:</b>  <i>Julie Page, Sarah Edwards</i>  <b>Clinical Chair:</b>  <i>Alison Edwards</i>  <b>Head of Nursing:</b>  <i>Joanna Poole</i></p>
<p>Children's Services (including the children's A&amp;E and theatres)  Children's Medical Services  Children's Surgical Services  Children's Critical Care,  Cardiac and Neurosciences Services</p> <p>St Michael's Services including:  - Neonatology and Transitional Care  - Fetal Medicine  - Reproductive Medicine  - Obstetric Services  - Gynaecology  - Maternal Medicine  - Audiology</p>	<p>General Medicine  Adult A&amp;E  Respiratory  Endocrinology  Neurology  Dermatology  Rheumatology  Sexual Health  Gastroenterology  Care of the Elderly  Liaison Psychiatry  SARC  Psychological Therapies</p>	<p>Colorectal Surgery  Upper GI Surgery  Thoracic Surgery  Orthopaedics  Vascular surgery  Maxillofacial surgery  Adult ENT  Ophthalmology (Eye Hospital)  Dental Hospital  General and Cardiac theatres  Queen's Day Unit  St Michael's Theatres  Central Sterile Services  Integrated Critical Care  ITU and outreach  Anaesthetics (excluding Cardiac and Paediatric anaesthesia)</p>	<p>Cardiac Surgery  Cardiology  Cardiac Anaesthesia  Cardiac Intensive Care  Oncology  Clinical Haematology  Homoeopathy  Cardiac Echo  Clinical Genetics  Genomics</p>	<p>Physiotherapy  Occupational Therapy  Orthotics, Nutrition &amp; Dietetics, Adult Speech and Language Therapy  Adult Audiology  Laboratory Medicine  Pharmacy  Radiology  Medical Physics &amp; Bioengineering  MEMO  Neurophysiology</p>	<p>Emergency Surgery  Endoscopy  Gastroenterology  Haematology  Lower GI  Oncology  Respiratory  Acute Medicine  Cardiology  Emergency Department  Intensive Care  Radiology  Upper GI  Anaesthetics  Care of the Elderly</p> <p>Service Lines:  Diabetes and Endocrinology; Geriatric Emergency Medicine; Microbiology, Outpatient services; Paediatrics; Palliative Care; Pathology / Blood sciences; Sexual Health; Stroke; Urology; Vascular Surgery; Audiology; Dietetics; Gynaecology; Pharmacy; Physiotherapy; Rheumatology  Speech &amp; Language Therapy; Trauma and Orthopaedics</p>

**Trust Services Division:** Andy Headdon - Director of Facilities & Estates, Steve Gray – CIO/Head of Digital Services, David Wynick - Director of Research