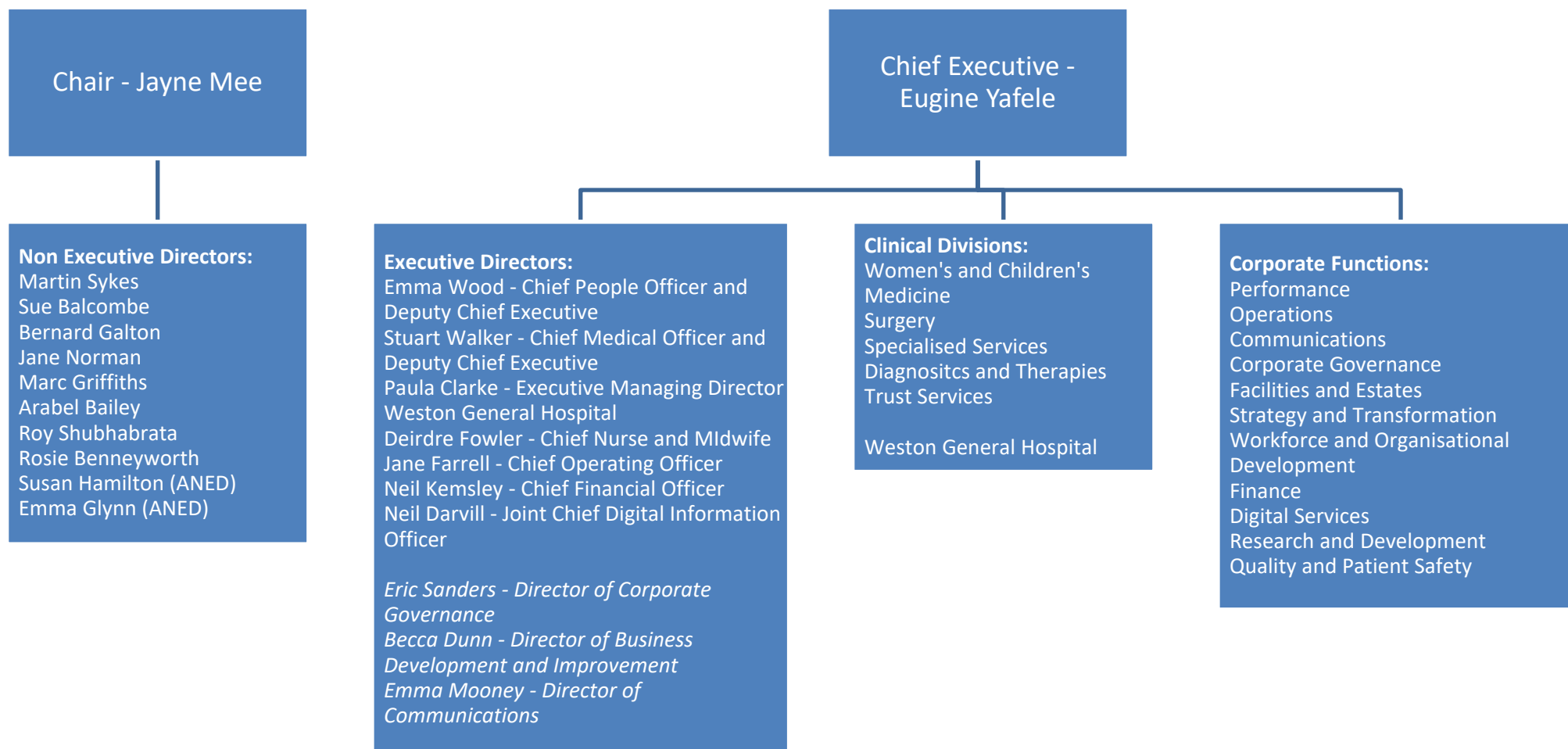


University Hospitals Bristol and Weston NHS Foundation Trust – Organisational Structure (Board and Divisions)





Women's and Children's Division Divisional Director: <i>Fiona Jones</i> Deputy Divisional Directors: <i>Jessica Whitton</i> Clinical Chair: <i>Martin Gargan</i> Paediatric Director of Nursing: <i>Rachel Hughes</i> Director of Nursing and Midwifery: <i>Sarah Windfeld</i> HR Business Partner: <i>Lisa Balmforth</i> Finance Manager <i>Adrian Mountford</i>	Medicine Division Divisional Director: <i>Lisa Galvani</i> Deputy Divisional Directors: <i>Sufi Hussain, Alice Woolstenholmes, John Millshines</i> Clinical Chair: <i>Emma-Kate Reed</i> Divisional Director of Nursing: <i>Hayley Long</i> Deputy Divisional Director of Nursing: <i>Nicola Gould, Johanna Lloyd-Rees, Jody Saunders and Angela Bezer</i> Divisional Finance Manager: <i>Tom Harley</i> Divisional HRBP: <i>Emma Harley and Olivia Wickson</i>	Surgery Division Divisional Director: <i>Ashley Livesey</i> Deputy Divisional Director: <i>Victoria McFarlane, Sarah Swift</i> Clinical Chair: <i>Sanchit Mehendale</i> Divisional Director of Nursing: <i>Sarah Chalkley</i> Divisional Finance Manager: <i>Sian Lewis</i> HR Business Partner: <i>Karen Gronback</i>	Specialised Services Division Divisional Director: <i>Owen Ainsley</i> Deputy Divisional Director: <i>Sophie Baugh and Sophie Nicolls</i> Clinical Chair: <i>Rachel Protheroe</i> Divisional Director of Nursing: <i>Helen Bishop</i> Divisional Finance Manager: <i>David O'Sullivan</i> HRBP: <i>Becky Hocking and Jane Narayan</i>	Diagnostic and Therapies Division Divisional Director: <i>Jenny Keeble</i> Deputy Divisional Director: <i>Louise Corrigan</i> Clinical Chair: <i>Rachel Bennett</i> Divisional Director of Professionals: <i>John Warburton</i> Divisional Finance Manager: <i>Karen Parker</i> Divisional HRBP: <i>Luke Britt</i>	Weston Division Executive Managing Director: <i>Paula Clarke</i> Deputy Medical Director: <i>Rebecca Maxwell</i> Deputy Chief Nurse: <i>Mark Goninon</i> Hospital Director: <i>Judith Hernandez Del Pinto</i> Deputy Divisional Directors: <i>Julie Page and Karen Maxfield</i> Clinical Chair: <i>Jim Portal</i> Deputy Clinical Chair: <i>Adekoyejo Odutola (Koye)</i> Divisional Director of Nursing: <i>Joanna Poole</i> Deputy Divisional Director of Nursing: <i>Elaine Williams</i> HRBP: <i>Steph Curtin</i> Divisional Finance Manager: <i>Amanda Stark</i>
---	--	---	--	---	--

<u>Women's and Children's Clinical Areas</u>	<u>Medicine Clinical Areas</u>	<u>Surgery Clinical Areas</u>	<u>Specialised Services Clinical Areas</u>	<u>D&T Clinical Areas</u>	<u>Weston Clinical Areas</u>
Children's: Community Children's Nursing Team Fetal Cardiology General Paediatrics Neonatology NHS National Barth Syndrome Service Paediatric Anaesthesia Paediatric Audiology (Children's Hearing Centre) Paediatric Bone Marrow Transplant Paediatric Burns Paediatric Burns Therapy Paediatric Cardiac Surgery Paediatric Cardiology Paediatric Dentistry Paediatric Dermatology Paediatric Emergency Department Paediatric Endocrinology Paediatric Epilepsy Surgery Paediatric Gastroenterology Paediatric Haematology Paediatric Immunology Paediatric Intensive Care Paediatric Major Trauma Paediatric Medicine Paediatric Metabolic Disease Paediatric Nephrology Paediatric Neurology Paediatric Neurophysiology Paediatric Neurosurgery Paediatric Nutrition & Dietetics Paediatric Occupational Therapy Service Paediatric Oncology Paediatric Palliative Care and Bereavement Support Paediatric Physiotherapy Paediatric Plastic Surgery Paediatric Psychological	Emergency Department Gastroenterology & Hepatology Dermatology Sleep/NIV Rheumatology Acute Medicine Respiratory Unity Sexual Health Same Day Emergency Care Liaison Psychiatry Care of the Elderly Diabetes & Endocrine Sexual Assault Referral Centre	Ophthalmology (Eye Hospital) Dental Hospital Trauma & Orthopaedics Adult ENT Thoracic Surgery Endoscopy Upper GI Surgery Anaesthetics (excluding Cardiac and Paediatric anaesthesia) Theatres Intensive Care Unit Pre-operative Care Unit Acute & Chronic Pain	BHI: Electrocardiogram (ECG) Percutaneous Coronary Intervention (PCI) - stents Echocardiography Pacemakers Exercise ECG Implantable cardiac defibrillator (ICD) Implantable loop recorder Cardioversion Angiography Cardiac resynchronisation therapy (CRT) Cardiac MRI Transcatheter Aortic Valve Implantation (TAVI) Cardiac CT Ablation Stress echocardiography Tilt table test Electrophysiology (EP) study Ambulatory heart monitoring Ambulatory blood pressure monitoring Outpatients Coronary Care Unit Cath Labs Adult Congenital Heart Disease Arrhythmia HEART team (acute coronary syndrome and cardiac rehabilitation) Heart Failure Cardiac Intensive Care Unit Cardiac Surgery St Michaels: Clinical Genetics BHOC: Chemotherapy Day Unit Clinical Trials	Laboratory Medicine Physiotherapy Occupational Therapy Nutrition & Dietetics Adult Speech & Language Therapy Adult Audiology Infection Control Medical Physics & Bioengineering MEMO Neurophysiology Orthotics Pharmacy Radiology	Emergency Surgery Endoscopy Gastroenterology Haematology Lower GI Oncology Respiratory Acute Medicine Cardiology Emergency Department Intensive Care Radiology Upper GI Anaesthetics Care of the Elderly Service Lines: Diabetes and Endocrinology; Geriatric Emergency Medicine; Microbiology, Outpatient services; Paediatrics; Palliative Care; Pathology / Blood sciences; Sexual Health; Stroke; Urology; Vascular Surgery; Audiology; Dietetics; Gynaecology; Pharmacy; Physiotherapy; Rheumatology Speech & Language Therapy; Trauma and Orthopaedics

Health Service Paediatric Radiology Paediatric Respiratory Medicine Paediatric Rheumatology Paediatric Speech & Language Therapy Paediatric Surgery Paediatric Trauma & Orthopaedic Surgery Paediatric Urology Radiotherapy Physics The South West UK Cleft Lip & Palate Service The South West UK Children's Burn Centre The West of England Cochlear Implant Programme St Michaels: Paediatric audiology Paediatric ENT West of England Hearing Implant Programme (WEHIP) Fetal medicine Fetal cardiology General gynaecology Gynae-oncology Early Pregnancy Clinic Maternal medicine Midwifery services Obstetrics NICU Neonatal transport service Physiotherapy (not W&C) Radiology (not W&C) Theatres (not W&C) Adult ENT (not W&C) Adult audiology (not W&C) Clinical Genetics (not W&C) Clinical Research Facility (not W&C)			Outpatients Oncology Haematology Bone Marrow Transplant Car-T Cell Teenage and Young People Unit Clinical psychology Supportive & Palliative Care Haemophilia Radiotherapy Gamma Knife		
--	--	--	---	--	--