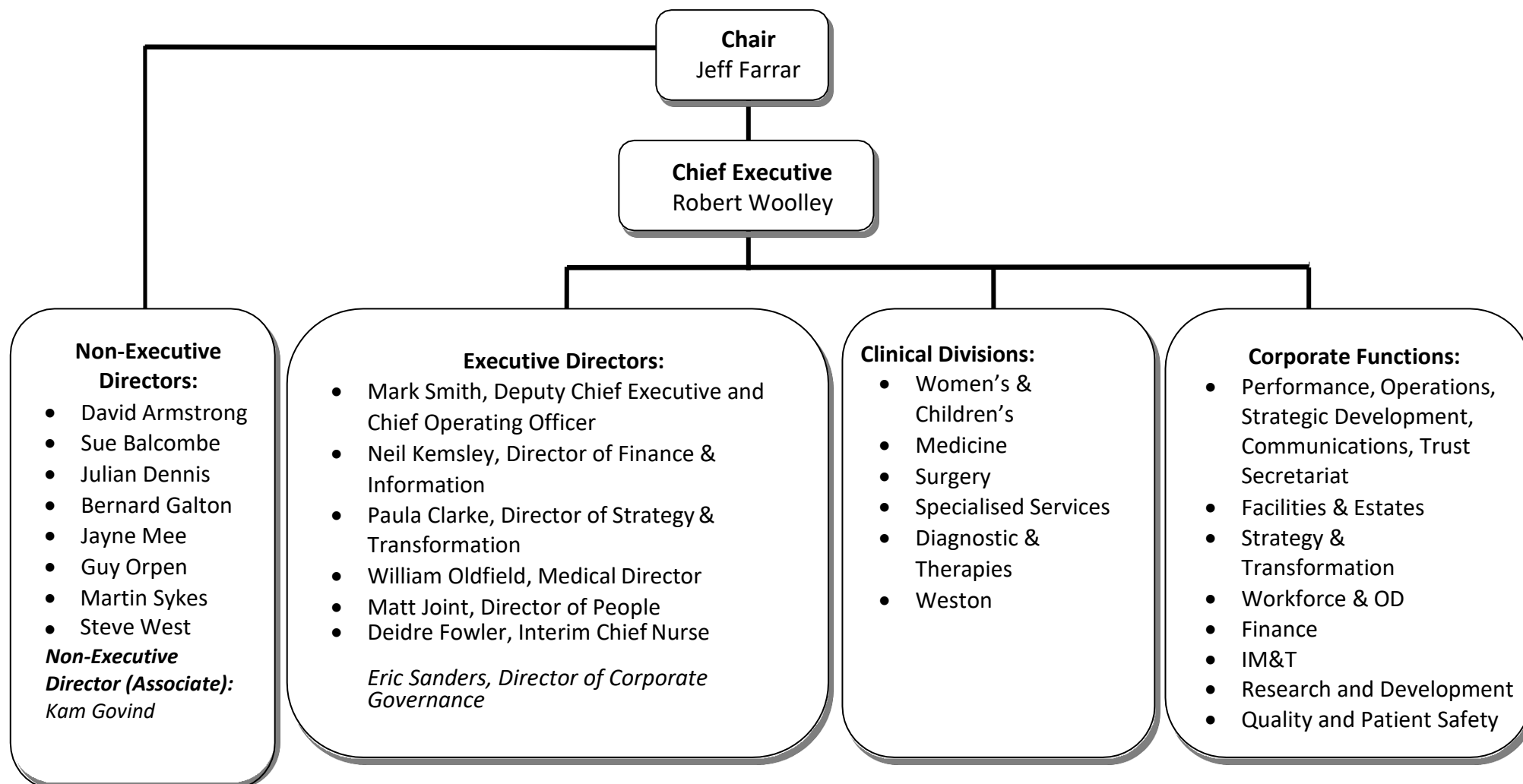


## University Hospitals Bristol and Weston NHS Foundation Trust – Organisational Structure (Board and Divisions)



<b><u>Women's and Children's Division</u></b>	<b><u>Medicine Division</u></b>	<b><u>Surgery, Head and Neck Division</u></b>	<b><u>Specialised Services Division</u></b>	<b><u>Diagnostic and Therapies Division</u></b>	<b><u>Weston Division</u></b>
<b>Divisional Director:</b> <i>Ian Barrington</i> <b>Clinical Chair:</b> <i>Martin Gargan</i> <b>Head of Paediatric Nursing:</b> <i>Rachel Hughes</i> <b>Head of Midwifery:</b> <i>Sarah Windfield</i>	<b>Divisional Director:</b> <i>Victoria Hastings</i> <b>Clinical Chair:</b> <i>Kathryn Bateman</i> <b>Head of Nursing:</b> <i>Anna MacGregor</i>	<b>Divisional Director:</b> <i>Deirdre Fowler (interim)</i> <b>Clinical Chair:</b> <i>Sanjoy Shah</i> <b>Head of Nursing:</b> <i>Vacant</i>	<b>Divisional Director:</b> <i>Owen Ainsley</i> <b>Clinical Chair:</b> <i>Mandy Townsend</i> <b>Head of Nursing:</b> <i>Helen Bishop</i>	<b>Divisional Director:</b> <i>Fiona Jones</i> <b>Clinical Chair:</b> <i>Rebecca Maxwell</i> <b>Head of Therapies:</b> <i>Scott Allan</i>	<b>Divisional Director:</b> <i>Sarah James</i> <b>Clinical Chair:</b> <i>Alison Edwards</i> <b>Head of Nursing:</b> <i>Juliet Neilson</i>
Children's Services (including the children's A&E and theatres) Children's Medical Services Children's Surgical Services Children's Critical Care, Cardiac and Neurosciences Services  St Michael's Services including: - Neonatology and Transitional Care - Fetal Medicine - Reproductive Medicine - Obstetric Services - Gynaecology - Maternal Medicine - Audiology	General Medicine Adult A&E Respiratory Endocrinology Neurology Dermatology Rheumatology Sexual Health Gastroenterology Care of the Elderly Liaison Psychiatry SARC Psychological Therapies	Colorectal Surgery Upper GI Surgery Thoracic Surgery Orthopaedics Vascular surgery Maxillofacial surgery Adult ENT Ophthalmology (Eye Hospital) Dental Hospital General and Cardiac theatres Queen's Day Unit St Michael's Theatres Central Sterile Services Integrated Critical Care ITU and outreach Anaesthetics (excluding Cardiac and Paediatric anaesthesia)	Cardiac Surgery Cardiology Cardiac Anaesthesia Cardiac Intensive Care Oncology Clinical Haematology Homoeopathy Cardiac Echo Clinical Genetics Genomics	Physiotherapy Occupational Therapy Orthotics, Nutrition & Dietetics, Adult Speech and Language Therapy Adult Audiology Laboratory Medicine Pharmacy Radiology Medical Physics & Bioengineering MEMO Neurophysiology	Emergency Surgery Endoscopy Gastroenterology Haematology Lower GI Oncology Respiratory Acute Medicine Cardiology Emergency Department Intensive Care Radiology Upper GI Anaesthetics Care of the Elderly  Service Lines: Diabetes and Endocrinology; Geriatric Emergency Medicine; Microbiology, Outpatient services; Paediatrics; Palliative Care; Pathology / Blood sciences; Sexual Health; Stroke; Urology; Vascular Surgery; Audiology; Dietetics; Gynaecology; Pharmacy; Physiotherapy; Rheumatology Speech & Language Therapy; Trauma and Orthopaedics

**Trust Services Division:** Andy Headdon- Director of Estates & Facilities, Steve Gray – CIO/Head of Digital Services, David Wynick - Director of Research – David Druett Head of Procurement